

Modeling with Fractional Laplace Transform by Difference Operator

Meganathan Murugesan¹, Britto Antony Xavier Gnanaprakasam¹ and Thabet Abdeljawad^{2,3,*}

¹Department of Mathematics, Sacred Heart College, Tirupattur - 635601, Vellore District, Tamil Nadu, S., India

²Department of Mathematics and General Sciences, Prince Sultan University, P. O. Box 66833, Riyadh 11586, Saudi Arabia

³Department of Medical Research, China Medical University, Taichung 40402, Taiwan

Received: 20 Oct. 2018, Revised: 8 Dec. 2018, Accepted: 10 Dec. 2018

Published online: 1 Oct. 2020

Abstract: In this research article, we develop and analyse the discrete fractional Laplace transform and obtain the properties of discrete fractional Laplace transform. Also, the discrete fractional Laplace transforms of certain functions like polynomial factorial, exponential functions, trigonometric functions, etc are derived. Moreover, we equate two types of solutions namely closed and summation forms and verify its efficacy with numerical results by MATLAB.

Keywords: Difference operator, Laplace transform, gamma function, fractional operator.

1 Introduction

Fractional calculus which deals with integration and differentiation with respect to arbitrary order has gained lot of interest during the last three decades. Since L'Hopital's letter to Leibniz in 1695 has raised a relevant question namely, "What does $\frac{\partial^m f(x)}{\partial x^m}$ mean if $m = \frac{1}{2}$?" This is considered to be the initiation of the idea of fractional calculus (Diethelm, 2010, Hilfer, 2000, Lazarevic, et al., 2014, Millar & Ross, 1993, Kumar & Saxena, 2016). These debates ended with several types fractional operators in which the fractionalizing process mainly depends on iterating the integral or the derivative. For example the Riemann-Liouville derivatives were defined after setting the Riemann-Liouville integrals through the Leibniz-Cauchy formula. For the applications one can refer, [1–8]. In the last three years some new types of fractional operators with nonsingular kernels have appeared where the fractionalizing manner depends on a limiting process using delta dirac functions. For such fractional operators and their discrete versions we may refer to [9–14].

In 1989, Miller and Ross [15] initiated the process to develop the theory for fractional finite differences. Further developments took place in 2007 and 2012 when the authors [16, 17] put forth several results and a discrete transform method for fractional order difference equation. In 2009, the authors [18, 19] have been founded the significance of Laplace transform technique. One can refer [20–25] and [26]- [37].

In this paper, we continue to build on their work [16, 17] to develop properties of fractional h -differences, define new type fractional Laplace and extorial transforms, and develop a method to apply the above transforms to polynomial

* Corresponding author e-mail: tabdeljawad@psu.edu.sa

factorial, geometric and logarithmic functions. Therefore, we review some notations and from the fractional calculus in Section 2 and in Section 3, we present some relevant results on fractional ℓ -difference operators and its properties. This results helps to solve problems on fractional Laplace transform in Section 4 and Section 5. Numerical examples are provided to illustrate of our findings. Conclusions are depicted in Section 6.

2 Preliminaries

Definition 1. The ℓ -difference operator for the real valued function $\psi(\lambda)$, is defined by

$$\Delta_{\ell}\psi(\lambda) = \frac{\psi(\lambda + \ell) - \psi(\lambda)}{\ell}, \quad (1)$$

and the infinite sum is defined by

$$\Delta_{\ell}^{-1}\psi(\lambda)|_{\theta}^{\infty} = \Delta_{\ell}^{-1}\psi(\infty) - \Delta_{\ell}^{-1}\psi(\theta) = \ell \sum_{i=0}^{\infty} \psi(\theta + i\ell). \quad (2)$$

Note that when $\Delta_{\ell}^{-1}\psi(\lambda)$ at ∞ is 0, it is obvious to denote ${}_{\infty}\Delta_{\ell}^{-1}\psi(\theta) = -\ell \sum_{i=0}^{\infty} \psi(\theta + i\ell)$ and

hence ${}_{\infty}\Delta_{\ell}^{-1}\psi(\lambda) = -\ell \sum_{i=0}^{\infty} \psi(\lambda + i\ell)$ is obtained by $\Delta_{\ell}({}_{\infty}\Delta_{\ell}^{-1}\psi(\lambda)) = \psi(\lambda)$.

Example 1. Since $\Delta_{\ell} \frac{1}{2\lambda} = \frac{1}{\ell} \left[\frac{1}{2\lambda+\ell} - \frac{1}{2\lambda} \right] = \frac{1}{\ell 2\lambda} \left(\frac{1}{2} - 1 \right)$, it is clear that $\Delta_{\ell}^{-1} \frac{1}{2\lambda} = \left(\frac{2^{\ell}}{1-2^{\ell}} \right) \frac{\ell}{2\lambda}$ and $\Delta_{\ell}^{-1} \frac{1}{2^{\infty}} = 0$.

By considering $\psi(\lambda) = \frac{1}{2\lambda}$ and $\theta = 0$ in (2) we get

$$\Delta_{\ell}^{-1} \frac{1}{2\lambda} \Big|_0^{\infty} = \ell \sum_{i=0}^{\infty} \frac{1}{2^{i\ell}} \Rightarrow \Delta_{\ell}^{-1} \frac{1}{2^{\infty}} - \Delta_{\ell}^{-1} \frac{1}{2^0} = \ell \sum_{i=0}^{\infty} \frac{1}{2^{i\ell}} \Rightarrow \frac{\ell 2^{\ell}}{1-2^{\ell}} = \ell \sum_{i=0}^{\infty} \frac{1}{2^{i\ell}}. \quad (3)$$

Here one can apply any real $h > 0$.

Even though the Example 1 is simple, arriving the relations (1) and (2) for fractional order difference operator ${}_{\infty}\Delta_{\ell}^{-\nu}$, ν is fraction, is complex but we have tried and achieved it. When $\ell \rightarrow 1$, operator Δ_{ℓ}^{ν} coincides with the operators used in [31,33,35]. As we are trying to find fractional order difference for polynomial factorial we give the following definitions and lemmas.

Definition 2. [32] The polynomial factorial function, for $\ell > 0, \nu \in R$ is defined by

$$\lambda_{\ell}^{[\nu]} = \ell^{\nu} \frac{\Gamma(\frac{\lambda}{\ell} + \nu)}{\Gamma(\frac{\lambda}{\ell})}, \quad (4)$$

where $\lambda_{\ell}^{[0]} = 1$ and $\frac{\lambda}{\ell} + \nu, \frac{\lambda}{\ell} \notin \{0, -1, -2, -3, \dots\}$.

Remark. [34] The Euler Gamma function of an infinite product as defined by

$$\Gamma(\lambda) = \frac{1}{\lambda} \prod_{j=1}^{\infty} \frac{(1 + \frac{1}{j})^{\lambda}}{(1 + \frac{\lambda}{j})}$$

The properties of the polynomial factorials are given in the following lemma.

Lemma 1. The results are satisfied the polynomial factorials;

- (i) $\ell(\frac{\lambda}{\ell} + \nu)\lambda_{\ell}^{[\nu]} = \lambda_{\ell}^{[\nu+1]}$, (ii) $\ell(\frac{\lambda}{\ell} - \nu)\lambda_{\ell}^{[\nu]} = \lambda_{\ell}^{[\nu-1]}$,
- (iii) $\lambda_{\ell}^{[m+n]} = \lambda_{\ell}^{[m]}(\lambda + m\ell)_{\ell}^{[n]}$,
- (iv) $\Delta_{\ell}\lambda_{\ell}^{[\nu]} = \nu(\lambda + \ell)_{\ell}^{[\nu-1]}$ and (v) $\Delta_{\ell}\lambda_{\ell}^{[\nu]} = \nu\lambda_{\ell}^{[\nu-1]}$.

Proof. The proof of (i) and (ii) are simple, hence omitted.

To prove (iii), taking $v = m + n$ in (4) gives $\lambda_\ell^{[m+n]} = \ell^{m+n} \frac{\Gamma(\frac{\lambda}{\ell} + m + n)}{\Gamma(\frac{\lambda}{\ell})}$

$$= \ell^m \ell^n \left[\frac{(\frac{\lambda}{\ell} + m + n - 1)(\frac{\lambda}{\ell} + m + n - 2) \cdots (\frac{\lambda}{\ell} + m) \Gamma(\frac{\lambda}{\ell} + m)}{\Gamma(\frac{\lambda}{\ell})} \right]$$

$$= \lambda_\ell^{[m]} \ell^n \left[\frac{(\frac{\lambda+m\ell}{\ell} + n - 1)(\frac{\lambda+m\ell}{\ell} + n - 2) \cdots (\frac{\lambda+m\ell}{\ell} + m) \Gamma(\frac{\lambda+m\ell}{\ell})}{\Gamma(\frac{\lambda+m\ell}{\ell})} \right],$$

which yields $\lambda_\ell^{[m+n]} = \lambda_\ell^{[m]} \ell^n \frac{\Gamma(\frac{\lambda+m\ell}{\ell} + n)}{\Gamma(\frac{\lambda+m\ell}{\ell})} = \lambda_\ell^{[m]} (\lambda + m\ell)_\ell^{[n]}$.

The results of (iv) and (v) are derived by taking ${}_a\Delta_\ell$ on polynomial factorials.

3 Fractional ℓ -difference operator and its properties

This section presents infinite sum representations of functions in $h^v(\infty)$ -space. $h^v(\infty)$ -space is the collection of all real valued functions $\psi(\lambda)$ such that $\sum_{r=0}^{\infty} (-1)^r \frac{\ell^{-v} \Gamma(v+1)}{\Gamma(r+1)\Gamma(v-r+1)} \psi(\lambda + r\ell)$ is finite. In the continuous case, we have definite integrals as well as indefinite integrals. As an analogous to continuous case, we define indefinite fractional difference using Gamma functions.

Definition 3. For $v > 0$ and the real valued function ψ , the fractional ℓ -difference operator Δ_ℓ^v is defined by

$$\Delta_\ell^v \psi(\lambda) = \ell^{-v} \sum_{i=0}^{\infty} (-1)^i \frac{\Gamma(v+1)}{\Gamma(i+1)\Gamma(v-i+1)} \psi(\lambda + i\ell). \tag{5}$$

The following example is result of (5).

Example 2. The following identities are arrived from (5):

(i)

$$\Delta_\ell^{\frac{1}{2}} \psi(\lambda) = \ell^{\frac{1}{2}} \left[\psi(\lambda) - \frac{1}{2} \psi(\lambda + \ell) - \frac{1}{8} \psi(\lambda + 2\ell) - \frac{1}{16} \psi(\lambda + 3\ell) - \frac{5}{128} \psi(\lambda + 4\ell) - \frac{7}{256} \psi(\lambda + 5\ell) - \frac{21}{1024} \psi(\lambda + 6\ell) - \dots \right]$$

(ii)

$$\Delta_\ell^{-\frac{1}{2}} \psi(\lambda) = \ell^{-\frac{1}{2}} \left[\psi(\lambda) + \frac{1}{2} \psi(\lambda + \ell) + \frac{3}{8} \psi(\lambda + 2\ell) + \frac{5}{16} \psi(\lambda + 3\ell) + \frac{35}{128} \psi(\lambda + 4\ell) + \frac{63}{256} \psi(\lambda + 5\ell) + \frac{231}{1024} \psi(\lambda + 6\ell) + \dots \right].$$

We can easily verified that $\Delta_\ell^{\frac{1}{2}} (\Delta_\ell^{-\frac{1}{2}} \psi(\lambda)) = \psi(\lambda)$.

Remark.(i) If $v = m$ is a positive integer, then the infinite sum (5) becomes finite sum,

(i.e) $\Delta_\ell^m \psi(\lambda) = \ell^{-m} \sum_{i=0}^m (-1)^i \frac{\Gamma(m+1)}{\Gamma(i+1)\Gamma(m-i+1)} \psi(\lambda + i\ell)$, since the remaining terms are zero.

(ii) Taking $\psi(\lambda) = \psi_1(\lambda) + \psi_2(\lambda)$ in (5) gives the linear property of Δ_ℓ^v .

Theorem 1. For two fractions v and $\mu > 0$, the following identities hold

(i) $\Delta_\ell^v (\Delta_\ell^\mu \psi(\lambda)) = \Delta_\ell^{v+\mu} \psi(\lambda)$ and (ii) $\Delta_\ell^v (\Delta_\ell^{-v} \psi(\lambda)) = \psi(\lambda)$.

Proof. (i) From the Definition 3, we have

$$\Delta_\ell^v (\Delta_\ell^\mu \psi(\lambda)) = \Delta_\ell^v \left(\sum_{i=0}^{\infty} (-1)^i \frac{\ell^{-\mu} \Gamma(\mu+1)}{\Gamma(i+1)\Gamma(\mu-i+1)} \psi(\lambda + i\ell) \right)$$

$$= \Delta_\ell^v \left[\psi(\lambda) - \mu \psi(\lambda + \ell) + \frac{\mu(\mu-1)}{2!} \psi(\lambda + 2\ell) - \frac{\mu(\mu-1)(\mu-2)}{3!} \psi(\lambda + 3\ell) + \dots \right]$$

$$= \left[\ell^{-v} \sum_{i=0}^{\infty} (-1)^i \frac{\Gamma(v+1)}{\Gamma(i+1)\Gamma(v-i+1)} \psi(\lambda + i\ell) - \mu \sum_{i=0}^{\infty} (-1)^i \frac{\ell^{-v} \Gamma(v+1)}{\Gamma(i+1)\Gamma(v-i+1)} \psi(\lambda + (i+1)\ell) \right.$$

$$\left. + \frac{\mu(\mu-1)}{2!} \sum_{i=0}^{\infty} (-1)^i \frac{\ell^{-v} \Gamma(v+1)}{\Gamma(i+1)\Gamma(v-i+1)} \psi(\lambda + (i+2)\ell) + \dots \right].$$

By expanding the summation and rearranging the terms, we get

$$\begin{aligned} \Delta_{\ell}^{\nu}(\Delta_{\ell}^{\mu} \psi(\lambda)) &= \left[\psi(\lambda) - (\nu + \mu)\psi(\lambda + \ell) + \frac{(\nu + \mu)(\nu + \mu - 1)}{2!} \psi(\lambda + 2\ell) \right. \\ &\quad \left. - \frac{(\nu + \mu)(\nu + \mu - 1)(\nu + \mu - 2)}{3!} \psi(\lambda + 3\ell) + \dots \right] \\ &= \ell^{-\mu-\nu} \sum_{i=0}^{\infty} (-1)^i \frac{\Gamma(\nu + \mu)}{\Gamma(i+1)\Gamma(\nu + \mu - i + 1)} \psi(\lambda + i\ell) = \Delta_{\ell}^{\nu+\mu} \psi(\lambda). \end{aligned}$$

(ii) The proof follows by taking $\mu = -\nu$ in (i), since $\Delta_{\ell}^{-\nu}$ is inverse of Δ_{ℓ}^{ν} for $\nu > 0$.

Definition 4. For $\nu > 0$ and the real valued function $\psi(\lambda)$. The inverse fractional ℓ -difference operator is defined by

$$\Delta_{\ell}^{-\nu} \psi(\lambda) \Big|_{\theta}^{\infty} = -\ell^{\nu} \sum_{i=0}^{\infty} (-1)^i \frac{\Gamma(1-\nu)}{\Gamma(i+1)\Gamma(1-\nu-i)} \psi(\theta + i\ell). \quad (6)$$

Remark. $\Delta_{\ell}^{-\nu} \psi(\infty) - \Delta_{\ell}^{-\nu} \psi(\theta) = -\sum_{i=0}^{\infty} (-1)^i \frac{\ell^{\nu} \Gamma(1-\nu)}{\Gamma(i+1)\Gamma(1-\nu-i)} \psi(\theta + i\ell)$ yields

$$\Delta_{\ell}^{-\nu} \psi(\theta) = \sum_{i=0}^{\infty} (-1)^i \frac{\ell^{\nu} \Gamma(1-\nu)}{\Gamma(i+1)\Gamma(1-\nu-i)} \psi(\theta + i\ell) \text{ and it is denoted as } {}_{\infty}\Delta_{\ell}^{-\nu} \psi(\theta).$$

Definition 5. The Caputo ℓ -difference operator for $0 < \nu < 1$, is defined by

$${}_a\Delta_{\ell}^{\nu} \psi(\lambda) = \Delta_{\ell}({}_a\Delta_{\ell}^{-(1-\nu)} \psi(\lambda)). \quad (7)$$

Theorem 2. Let $\nu > 0$ be a fraction, $\psi \in [0, \infty)$ and $c \neq 0$. Then, we have

$${}_a\Delta_{\ell}^{-\nu} \frac{1}{c^{\lambda}} \Big|_a^{\infty} = \frac{\ell^{\nu}}{c^{\lambda}} \left(1 - \frac{1}{c^{\ell}} \right)^{-\nu} \Big|_a^{\infty} = -\sum_{i=0}^{\infty} (-1)^i \frac{\ell^{\nu} \Gamma(1-\nu)}{\Gamma(i+1)\Gamma(1-\nu-i)} \frac{1}{c^{a+i\ell}}. \quad (8)$$

Proof. The expression $\Delta_{\ell}^{\nu} \frac{1}{c^{\lambda}} = \sum_{i=0}^{\infty} (-1)^i \frac{\ell^{-\nu} \Gamma(\nu+1)}{\Gamma(i+1)\Gamma(\nu-i+1)} \frac{1}{c^{\lambda+i\ell}}$ is obtained by taking $\psi(\lambda) = \frac{1}{c^{\lambda}}$ in (5). The binomial expansion for rational index gives ${}_a\Delta_{\ell}^{\nu} \frac{1}{c^{\lambda}} = \frac{\ell^{-\nu}}{c^{\lambda}} \left(1 - \frac{1}{c^{\ell}} \right)^{\nu}$.

Now (8) follows by taking ${}_a\Delta_{\ell}^{-\nu}$ on both sides, linear property and replacing ψ by a .

Example 3. For the particular values of $c = 2, h = 3, a = 3$ and $\nu = 0.5$ in (8) gives

$${}_3\Delta_{\ell}^{-0.5} \frac{1}{2^{\lambda}} \Big|_3^{\infty} = \frac{3^{0.5}}{2^{\lambda}} \left(1 - \frac{1}{2^3} \right)^{-0.5} \Big|_3^{\infty} = \sum_{i=0}^{\infty} (-1)^i \frac{3^{0.5} \Gamma(0.5)}{\Gamma(i+1)\Gamma(0.5-i)} \frac{1}{2^{3+3i}}.$$

Which are verified by MATLAB with the coding as given below:

```
3. ^ (0.5)(1./8). * ((7./8). ^ (-0.5)) = symsum((( -1). ^ i. * 3. ^ (0.5). * gamma(0.5)). / (gamma(i+1). * gamma(0.5 - i). * (2. ^ (3 + 3. * i))), i, 0, inf).
```

Corollary 1. Let ψ be the real valued function and $\nu, \ell > 0$, then we have

$${}_a\Delta_{\ell}^{-\nu} \frac{1}{e^{s\lambda}} \Big|_a^{\infty} = \frac{\ell^{\nu}}{e^{s\lambda}} \left(1 - \frac{1}{e^{s\ell}} \right)^{-\nu} \Big|_a^{\infty} = -\sum_{i=0}^{\infty} (-1)^i \frac{\ell^{\nu} \Gamma(1-\nu)}{\Gamma(i+1)\Gamma(1-\nu-i)} \frac{1}{e^{sa+i\ell}}. \quad (9)$$

Proof. Replacing $\frac{1}{c^{\lambda}}$ by $\frac{1}{e^{s\lambda}}$ in Theorem 2, we get the proof.

4 Fractional Laplace transform by ℓ -difference operator

Here, we define and develop a new type fractional Laplace transform and its properties. The fractional Laplace transform of certain functions are derived and presented with numerical examples.

Definition 6. For the real valued function $\psi(\lambda)$. Then the Fractional Laplace Transform (FLT) is defined as

$$L_{\ell}^{\nu}[\psi(\lambda)] = \Delta_{\ell}^{-\nu} \psi(\lambda) e^{-s\lambda} \Big|_0^{\infty} = - \sum_{i=0}^{\infty} (-1)^i \frac{\ell^{\nu} \Gamma(1-\nu)}{\Gamma(i+1)\Gamma(1-\nu-i)} \psi(i\ell) e^{-si\ell}. \tag{10}$$

Theorem 3. Let $\nu, \ell > 0$ and $\lambda \in [0, \infty)$, we have

$$\theta \Delta_{\ell}^{-\nu} \lambda_{\ell}^{(\mu)} = \frac{\Gamma(\mu+1)}{\Gamma(\mu+\nu+1)} \lambda_{\ell}^{(\mu+\nu)}. \tag{11}$$

Proof. Since for $\nu > 0$, the proof follows by proving $\Delta_{\ell}[f(\lambda)] = \Delta_{\ell}[g(\lambda)]$,

where $g(\lambda) = \frac{\Gamma(\mu+1)}{\Gamma(\mu+\nu+1)} \lambda_{\ell}^{(\mu+\nu)}$ and $f(\lambda) = \theta \Delta_{\ell}^{-\nu} \lambda_{\ell}^{(\mu)}$.

From the Lemma 1, we get

$$\Delta g(\lambda) = \frac{\Gamma(\mu+1)}{\Gamma(\mu+\nu+1)} \Delta \lambda_{\ell}^{(\mu+\nu)} = \frac{\Gamma(\mu+1)(\mu+\nu)\ell}{\Gamma(\mu+\nu+1)} \lambda_{\ell}^{(\mu+\nu-1)} = \frac{\Gamma(\mu+1)}{\Gamma(\mu+\nu)} \lambda_{\ell}^{(\mu+\nu-1)}. \tag{12}$$

By repeating from Lemma 1, which gives

$$\Delta_{\ell}[f(\lambda)] = \Delta_{\ell}(\theta \Delta_{\ell}^{-\nu}) \lambda_{\ell}^{(\mu)} = \theta \Delta_{\ell}^{-(\nu-1)} \lambda_{\ell}^{(\mu)} = \frac{\Gamma(\mu+1)}{\Gamma(\mu+\nu)} \lambda_{\ell}^{(\mu+\nu-1)}. \tag{13}$$

Equating (12) and (13), we get the proof.

Theorem 4. Let $\nu, \ell > 0$, and $\lambda \in [0, \infty)$, then we have

$$\Delta_{\ell}^{-\nu} [\lambda_{\ell}^{(\mu)} e^{-s\lambda}] = \sum_{i=1}^{\mu+1} \frac{(-1)^{i-1} \ell^{\nu} \mu^{(i-1)}}{(i-1)!} \frac{(\nu+i-2)^{(i-1)} \ell^{i-1}}{(1-e^{-s\ell})^{i+\nu-1}} \frac{\lambda_{\ell}^{(\mu+1-i)}}{e^{s(\lambda+(i-1)\ell)}}. \tag{14}$$

Proof. The proof follows by proceeding in the same way of Theorem 3.

Corollary 2. Let $\nu, \ell > 0$, and $\lambda \in [0, \infty)$, then we have

$$\Delta_{\ell}^{-\nu} [\lambda_{\ell}^{(\mu)} e^{-s\lambda}] \Big|_0^{\infty} = \frac{(-1)^{\mu} \ell^{\nu} \mu^{(\mu)}}{\mu!} \frac{(\nu+\mu-1)^{(\mu)} \ell^{\mu}}{(1-e^{-s\ell})^{\mu+\nu}} \frac{1}{e^{s\mu\ell}}. \tag{15}$$

Proof. Taking the limits 0 to ∞ in (14), we get the proof.

Corollary 3. By applying the fractional Laplace transform, we get

$$L_{\ell}^{\nu} [\lambda_{\ell}^{(\mu)}] = \frac{(-1)^{\mu} \ell^{\nu} \mu^{(\mu)}}{\mu!} \frac{(\nu+\mu-1)^{(\mu)} \ell^{\mu+1}}{(1-e^{-s\ell})^{\mu+\nu}} \frac{1}{e^{s\mu\ell}} = \sum_{i=0}^{\infty} (-1)^i \frac{\ell^{\nu} \Gamma(1-\nu)(i\ell)^{(\mu)} e^{-si\ell}}{\Gamma(i+1)\Gamma(1-\nu-i)}. \tag{16}$$

Proof. Product on both sides of (15) by ℓ , which gives

$$L_{\ell}^{\nu} [\lambda_{\ell}^{(\mu)}] = \Delta_{\ell}^{-\nu} [\lambda_{\ell}^{(\mu)} e^{-s\lambda}] \Big|_0^{\infty} = \frac{(-1)^{\mu} \ell^{\nu} \mu^{(\mu)}}{\mu!} \frac{(\nu+\mu-1)^{(\mu)} \ell^{\mu+1}}{(1-e^{-s\ell})^{\mu+\nu}} \frac{1}{e^{s\mu\ell}}. \tag{17}$$

Now the proof of (16) is arrived from (10).

Example 4. For the particular values of $\mu = 2$ in (16), we have

$$L_{\ell}^{\nu}[\lambda_{\ell}^{(2)}] = \frac{(\nu)(\nu + 1)\ell^{\nu+3}}{(1 - e^{-s\ell})^{2+\nu}e^{2s\ell}} = \sum_{i=0}^{\infty} (-1)^i \frac{\ell^{\nu}\Gamma(1 - \nu)}{\Gamma(i + 1)\Gamma(1 - \nu - i)} (i\ell)^{(2)} e^{-si\ell}. \tag{18}$$

For $\nu = 0.6, s = 4$ and $h = 3$ in (18), which is verified and the coding as: $(0.6 * (1.6) * 27) * 3 \wedge (0.6) ./ ((1 - \exp(-12)) \wedge (2.6) * \exp(24)) = 3 * \text{symsum}(((-1) \wedge i * 3 \wedge (0.6) * \text{gamma}(0.4) * (3 * i) * (3 * i - 3) * \exp(-12 * i)) ./ (\text{gamma}(i + 1) * \text{gamma}(0.4 - i)), i, 0, \text{inf})$.

The diagrams of outcomes of FLT for polynomial factorial generated by MATLAB are shown below. Figure 1. tells that the input function(signal) as polynomial factorial and Figure 2. tells that the output signal in the frequency domain by varying the values of ν .

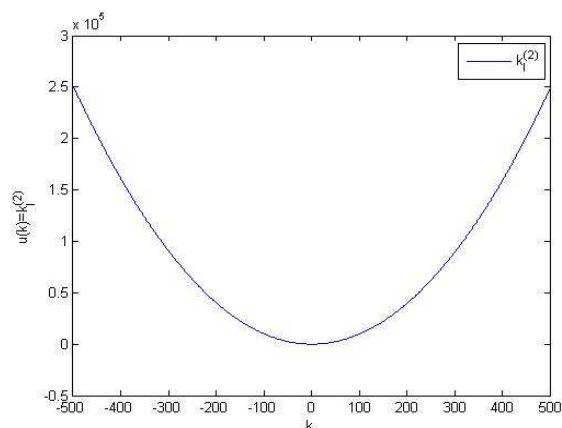


Fig. 1: Time Domain Signal for Polynomial Factorial

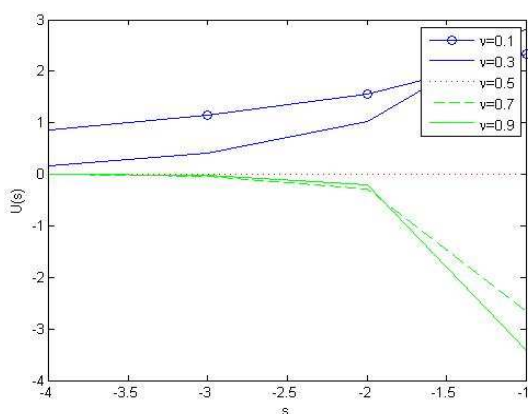


Fig. 2: Frequency Signal for Fraction

5 Fractional extorial transform by ℓ -difference operator

Definition 7. Let $\nu, h > 0$, we define the extorial function as

$$e^{\lambda_{\ell}^{[\nu]}} = 1 + \frac{\lambda_{\ell}^{[\nu]}}{1!} + \frac{\lambda_{\ell}^{[2\nu]}}{2!} + \frac{\lambda_{\ell}^{[3\nu]}}{3!} + \dots \tag{19}$$

Remark. (i) In particular value of $\nu = 1$, (19) gives

$$e^{\lambda_\ell^{[1]}} = 1 + \frac{\lambda_\ell^{[1]}}{1!} + \frac{\lambda_\ell^{[2]}}{2!} + \frac{\lambda_\ell^{[3]}}{3!} + \dots \tag{20}$$

(ii) Since $e^\lambda \neq e^{\lambda_\ell^{[1]}}$.

Definition 8. For the real valued function ψ , then the Fractional extorial transform is defined by

$$\mathcal{E}_\ell^\nu[\psi(\lambda)] = \Delta_\ell^{-\nu} \psi(\lambda) e^{-s\lambda_\ell^{[\nu]}} \Big|_0^\infty = - \sum_{i=0}^\infty (-1)^i \frac{\ell^\nu \Gamma(1-\nu)}{\Gamma(i+1)\Gamma(1-\nu-i)} \psi(i\ell) e^{-s(i\ell)_\ell^{[\nu]}}. \tag{21}$$

The fractional extorial transform of certain functions like polynomial factorial and logarithmic functions are obtained.

Theorem 5. Let $\lambda \in [0, \infty)$, then

$$\mathcal{E}_\ell^\nu[\lambda_\ell^{(\mu)}] = - \sum_{i=0}^\infty (-1)^i \frac{\ell^\nu \Gamma(1-\nu)}{\Gamma(i+1)\Gamma(1-\nu-i)} (i\ell)_\ell^{(\mu)} e^{-s(i\ell)_\ell^{[\nu]}}. \tag{22}$$

Proof. Taking $\psi(\lambda) = \lambda_\ell^{(\mu)}$ in (21).

Theorem 6. Let $\lambda \in [0, \infty)$, then

$$\mathcal{E}_\ell^\nu[\log a\lambda] = - \sum_{i=0}^\infty (-1)^i \frac{\ell^\nu \Gamma(1-\nu)}{\Gamma(i+1)\Gamma(1-\nu-i)} \log a(i\ell) e^{-s(i\ell)_\ell^{[\nu]}}. \tag{23}$$

Proof. Applying the fractional extorial transform for the function $\psi(\lambda) = \log a\lambda$ we get (23).

Remark. To get the classical Laplace transform one can apply $\ell \rightarrow 0$ and $\nu = 1$.

6 Conclusion

In this research, we have defined the discrete fractional Laplace transform using inverse fractional difference operators and obtained several related results. Also, we have proposed a new type of fractional extorial transform and eventually discussed its sums. The properties and several results have been obtained by its transform for certain functions. A verification of our findings by MATLAB has been provided as well.

Acknowledgements

The last author would like to thank Prince Sultan University for funding this work through research group Nonlinear Analysis Methods in Applied Mathematics (NAMAM) group number RG-DES-2017-01-17.

References

[1] E. Ahmed and A. S. Elgazzar, On fractional order differential equations model for nonlocal epidemics, *Phys. A* **379**, 607–614 (2007).
 [2] P. L. Butzer and U. Westphal, *An introduction to fractional calculus*, World Scientific Press, Singapore, 2000.
 [3] R. Hilfer, *Applications of fractional calculus in physics*, Word Scientific Press, Singapore, 2000.

- [4] A. A. Kilbas, H. M. Srivastava and J. J. Trujillo, *Theory and applications of fractional differential equations*, Elsevier, Amsterdam, 2006.
- [5] N. Laskin, Fractional quantum mechanics and Levy path integrals, *Phys. Lett. A* **268**, 298–305 (2000).
- [6] N. Ozalp and E. Demirci, A fractional order SEIR model with vertical transmission, *Math. Comput. Mod.* **54**, 1–6 (2011).
- [7] I. Podlubny, *Fractional differential equations*, Academic Press, New York, 1999.
- [8] S. G. Samko, A. A. Kilbas and O. I. Marichev, *Fractional integrals and derivatives: theory and applications*, Gordon and Breach, Yverdon, 1993.
- [9] M. Caputo and M. Fabrizio, A new definition of fractional derivative without singular kernel, *Progr. Fract. Differ. Appl.* **1**(2), 73–85 (2015).
- [10] A. Atangana and D. Baleanu, New fractional derivative with non-local and non-singular kernel, *Therm. Sci.* **20**(2), 757–763 (2018).
- [11] T. Abdeljawad and D. Baleanu, Discrete fractional differences with nonsingular discrete Mittag-Leffler kernels, *Adv. Differ. Equ.* **2016**:232 (2016).
- [12] T. Abdeljawad and D. Baleanu, Integration by parts and its applications of a new nonlocal fractional derivative with Mittag-Leffler nonsingular kernel, *J. Nonlin. Sci. Appl.* **10**(3), 1098–1107 (2017).
- [13] T. Abdeljawad and D. Baleanu, On fractional derivatives with exponential kernel and their discrete versions, *J. Rep. Math. Phys.* **80**(1), 11–27 (2017).
- [14] T. Abdeljawad, Fractional operators with exponential kernels and a Lyapunov type inequality, *Adv. Differ. Equ.* **2017**:313 (2017).
- [15] K. S. Miller and M. Ross, Fractional difference calculus in univalent functions, fractional calculus and their applications (Koriyama, 1988), *Ellis Horwood Ser. Math. Appl.* 139–152 (1989).
- [16] F. M. Atici and P. W. Eloe, A transform method in discrete fractional calculus, *Int. J. Differ. Equ.* **2**(2), 165–176 (2007).
- [17] J. F. Cheng and Y. M. Chu, *Fractional difference equations with real variable*, *Abstr. Appl. Anal.* Article ID 918529 (2012).
- [18] Y. Li, Y. Q. Chen and I. Podlubny, Stability of fractional-order nonlinear dynamic systems: Lyapunov direct method and generalized Mittag-Leffler stability, *Comput. Math. Appl.* **59**, 1810–1821 (2010).
- [19] Y. Li, Y. Q. Chen and I. Podlubny, Mittag-Leffler stability of fractional order nonlinear dynamic systems, *Automatica* **45**, 1965–1969 (2009).
- [20] Z. Gao, A computing method on stability intervals of time-delay for fractional-order retarded systems with commensurate time-delays, *Automatica* **50**, 1611–1616 (2014).
- [21] S. E. Hamamci, An algorithmic for stabilization of fractional-order time delay systems using fractional-order PID controllers, *IEEE Trans. Automat. Contr.* **52**, 1964–1969 (2007).
- [22] R. Malti, M. Aoun and F. Levron, Analytical computation of the H_2 -norm of fractional commensurate transfer functions, *Automatica* **47**, 2425–2432 (2011).
- [23] R. Malti, X. Moreau, F. Khemane and A. Oustaloup, Stability and resonance conditions of elementary fractional transfer functions, *Automatica* **47**, 2462–2467 (2011).
- [24] A. Mesbahi and M. Haeri, Robust non-fragile fractional order PID controller for linear time invariant fractional delay systems, *J. Proc. Contr.* **24**, 1489–1494 (2014).
- [25] H. Ye, J. Gao and Y. Ding, A generalized Gronwall inequality and its application to a fractional differential equation, *J. Math. Anal. Appl.* **328**, 1075–1081 (2007).
- [26] T. Abdeljawad, On delta and nabla Caputo fractional differences and dual identities, *Discr. Dynam. Nat. Soc.* **2013**, Article ID 406910 (2013).
- [27] T. Abdeljawad and F. Atici, On the definitions of nabla fractional differences, *Abstr. Appl. Anal.* **2012**, 1–13 (2012).
- [28] T. Abdeljawad, Dual identities in fractional difference calculus within Riemann, *Adv. Differ. Equ.* **2013**:36 (2013).
- [29] T. Abdeljawad, F. Jarad and D. Baleanu, A semigroup-like property for discrete Mittag-Leffler functions, *Adv. Differ. Equ.* **2012**, 1–7 (2012).
- [30] T. Abdeljawad, Different type kernel h-fractional differences and their fractional h-sums, *Chaos Solit. Fract.* **116**, 146–156 (2018).
- [31] P. Baliarsingh, Some new difference sequence spaces of fractional order and their dual spaces, *Appl. Math. Comput.* **219**, 9737–9742 (2013).
- [32] N. R. O. Bastos, R. A. C. Ferreira and D. F. M. Torres, Necessary optimality conditions for fractional difference problems of the calculus of variations, *Discr. Contin. Dyn. Syst.* **29**(2), 417–437 (2011).

- [33] M. Et and R. Çolak, On some generalized difference sequence spaces, *Soochow J. Math.* **21**(4), 377–386 (1995).
- [34] P. J. Davis, Leonhard Euler integral historical profile of the Gamma function, *Amer. Math. Soc.* **66**(10), 849–869 (1959).
- [35] H. Kızmaz, On certain sequence spaces, *Canad. Math. Bull.* **24**(2), 169–176 (1981).
- [36] I. Suwan, S. Owies and T. Abdeljawad, Monotonicity results for h-discrete fractional operators and application, *Adv. Differ. Equ.* **2018**:2017 (2018).
- [37] T. Abdeljawa and Q. M. Al-Mdallal, Discrete Mittag-Leffler kernel type fractional difference initial value problems and Gronwall's inequality, *J. Comput. Appl. Math.* **339**, 218–230 (2018).
-